

GRUMBACHER®

# PAINTING TUTORIAL

## ACRYLIC PAINTING

### Cabbages

By Sophie Theroux



**Level:** Intermediate

**Average Time to Complete:** 2 hours

**Skills Learned:**

#### Supplies Used:

##### Sundries:

- ☐ HB Pencil
- ☐ Bright #6 Brush
- ☐ Round #1 & #6 Brushes
- ☐ Acrylic Paper
- ☐ Palette & Water
- ☐ Palette Knife

##### Grumbacher Academy Acrylic:

- ☐ Process Yellow
- ☐ Cadmium Red Medium
- ☐ Process Magenta
- ☐ Cobalt Blue
- ☐ Sap Green
- ☐ Titanium White

- Composition
- Layering
- Blending
- Shadow and Highlight
- Color Mixing

GRUMBACHER®

# Cabbages Color Mixing

## Colors & Mixing Abbreviations



## Mixing Ratio Formulas

### Color 1



3 Parts Green  
3 Parts Blue  
4 Parts Magenta  
.25 Part Yellow  
.25 Part White

### Color 2



4 Parts Green  
2 Parts White  
2 Parts Blue  
.25 Parts Yellow

### Color 3



1 Part White  
1 Part Yellow

### Color 4



2 Parts White  
.25 Part Yellow  
.25 Part Magenta

### Color 5



2 Parts White  
.25 Part Yellow  
.5 Part Magenta  
.5 Part Green

### Color 6



1 Part Red  
1 Part Magenta

### Color 7



1 Part Yellow  
1 Part White  
2 Parts Green

### Color 8



1 Part Magenta  
1 Part White  
.25 Part Red



# GRUMBACHER®

# Cabbages

## Steps 1-3



1

With a pencil, mark out where the center of your canvas is to help guide the placement and proportion of the vases and cabbages. Sketch the rough shapes of the objects in the painting. We used a dark pencil to show you how to make your guides, but when you create your own guides, use a light pencil so that it won't show through your paint.



2

Remove the sheet of paper from your pad, if you are using one of the Grumbacher Acrylic Pads that feature the In & Out Pages, you can insert your sheet later when you are finished with your work.



3

Create the dark green background as shown with **Color 1** adding 1 part water to your paint on the palette so that it is a fluid, fast drying layer.

### Color 1



3 Parts Green  
3 Parts Blue  
4 Parts Magenta  
.25 Part Yellow  
.25 Part White



# GRUMBACHER®

## Cabbages

### Steps 4-6



4

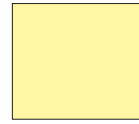
Add water to **Color 2** before painting in the rest of the canvas left uncovered in Step 1. Blend edges of the dark and light paint together gently by using a light brush stroke. Blend in **Color 3** at the bottom to create a warm glow.

#### Color 2



4 Parts Green  
2 Parts White  
2 Parts Blue  
.25 Parts Yellow

#### Color 3



1 Part White  
1 Part Yellow



5

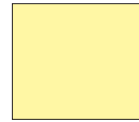
Block out the colors in the glass using **Color 2** for the teal areas, and **Color 1** for the shadows. For the lighter teal area, mix white into **Color 2** and block in. Paint in the larger blocks of color first, and then add the smaller details second, don't blend.

#### Color 2



4 Parts Green  
2 Parts White  
2 Parts Blue  
.25 Parts Yellow

#### Color 3



1 Part White  
1 Part Yellow



6

Apply **Color 4** to the vases beginning in the center of each light beige shape and working outward from the centers so that your brush does not pick up any of the colors you placed in Step 4.

#### Color 4



2 Parts White  
.25 Part Yellow  
.25 Part Magenta

# GRUMBACHER®

## Cabbages

### Steps 7-9



7

Apply **Color 5** to the top and left of the beige block you created in Step 5 for the rear vase and along the right side of the front base. Add the stems by painting thin brown lines with **Color 6**. Work outward to create smooth edges on the stems.

#### Color 5



2 Parts White  
.25 Part Yellow  
.5 Part Magenta  
.5 Part Green

#### Color 6



1 Part Red  
1 Part Magenta



8

Using **Color 4**, paint in cut marks on the stem. Stroke in **Color 3** beneath these marks. Continue adding variation of color to the glass. Begin to blend the edges of the colors to eliminate sharpe lines. With **white**, add in highlights around the corners and tops of the vases.

#### Color 4

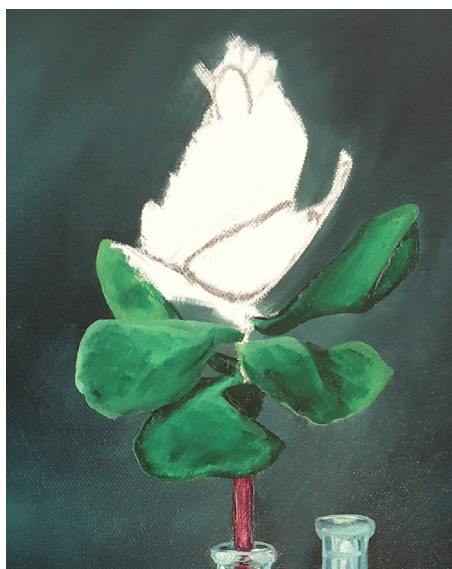


2 Parts White  
.25 Part Yellow  
.25 Part Magenta

#### Color 3



1 Part White  
1 Part Yellow



9

Use pure **Sap Green** mixed with water to block out the leaves. Add **Color 1** mixed with water to the shadow areas. Next, dab in **Color 7** mixed with water for lighter green areas, blend only slightly to keep a mottled look.

#### Color 1



3 Parts Green  
3 Parts Blue  
4 Parts Magenta  
.25 Part Yellow  
.25 Part White

#### Color 7



1 Part Yellow  
1 Part White  
2 Parts Green



# GRUMBACHER®

## Cabbages

### Steps 10-12



10

Water down **Color 8** to sketch in the leaves of the cabbage. Begin to fill in the lightest leaves with **Color 8**, blend in a little **white** toward the outer edges for a light pink. Apply **Color 7** to the outer part of the variegated leaves, gently blend to join the light pink and green.

#### Color 8



1 Part Magenta  
1 Part White  
.25 Part Red

#### Color 7



1 Part Yellow  
1 Part White  
2 Parts Green



11

Use **Color 6** to paint in the darkest leaves and shadows, **Color 8** for the mid range pink, and add **white** to **Color 8** for the lightest tips of the leaves. Create contrast to define each leaf and make sure the edges are rough.

#### Color 6



1 Part Red  
1 Part Magenta

#### Color 8



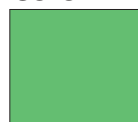
1 Part Magenta  
1 Part White  
.25 Part Red



12

Use pure **Sap Green** to sketch in the top green leaves. Add white to **Color 7** and block in the individual leaves, using the lightest green at the edges and the darker green as shadows. Be sure to create a bumpy edge.

#### Color 7



1 Part Yellow  
1 Part White  
2 Parts Green

# GRUMBACHER®

## Cabbages

### Steps 13-14



13

Begin painting the second cabbage by blocking in the green leaves with **Color 1** and adding highlights with **Color 7**. Sketch out each purple leaf with **Color 6** and fill in with **Color 8**. Continue to add in **Color 6** for shadow and white to **Color 8** for highlights.

#### Color 1



3 Parts Green  
3 Parts Blue  
4 Parts Magenta  
.25 Part Yellow  
.25 Part White

#### Color 7



1 Part Yellow  
1 Part White  
2 Parts Green

#### Color 6



1 Part Red  
1 Part Magenta

#### Color 8



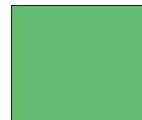
1 Part Magenta  
1 Part White  
.25 Part Red



14

Add the light green leaves to the tops of the cabbages as shown using **Color 7**. Add **white** to this mix for the lightest areas. Add even more **white** for a pale green, add to the very tip of a round brush and paint in a bumpy edge.

#### Color 7



1 Part Yellow  
1 Part White  
2 Parts Green

# GRUMBACHER®

# Cabbages

## Steps 15-16



15

Wait until your work is dry to the touch before Step 15. Use **Color 6** at the very tip of your round brush to paint in the dark veins in the cabbage. Use **white** mixed in with **Color 7** to paint in the light green veins. Add water to help the paint flow more smoothly.

### Color 6



1 Part Red  
1 Part Magenta

### Color 7



1 Part Yellow  
1 Part White  
2 Parts Green



16

Lastly, add the veins in the same manner to the leaves at the base of the vases. Most veins are **Color 6**, but a few are the **light green** used in Step 15. Finish by adding highlights and shadows around the edges of the leaves.

### Color 6



1 Part Red  
1 Part Magenta