

GRUMBACHER®

# PAINTING TUTORIAL

## ACRYLIC PAINTING

### Roses & Berries

By Sophie Theroux



**Level:** Intermediate

**Average Time to Complete:** 2 hours

**Skills Learned:**

#### Supplies Used:

##### Sundries:

- ☐ HB Pencil
- ☐ Bright #6 Brush
- ☐ Round #1 & #6 Brushes
- ☐ Acrylic Paper
- ☐ Palette & Water
- ☐ Palette Knife

##### Grumbacher Academy Acrylic:

- ☐ Process Yellow
- ☐ Cadmium Red Medium
- ☐ Process Magenta
- ☐ Cobalt Blue
- ☐ Sap Green
- ☐ Titanium White

- Composition
- Layering
- Blending
- Shadow and Highlight
- Color Mixing

GRUMBACHER®

# Roses & Berries Color Mixing

## Colors & Mixing Abbreviations

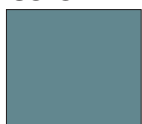


### Color 1



2 Parts Green  
2 Parts Blue  
1 Part Red

### Color 2



1 Part White  
.25 Part Green  
.25 Part Blue

### Color 3



1 Part White  
1 Part Yellow

## Mixing Ratio Formulas



### Color 4



1 Part Green  
1 Part Blue  
1 Red

### Color 5



1 Part Magenta  
1 Part Green

### Color 6



1 Part Blue  
1 Part White

### Color 7



1 Part Yellow  
1 Part White  
1 Part Green

### Color 8



2 Parts White  
1 Part Yellow

### Color 9



2 Parts Magenta  
1 Part White

### Color 10



1 Part Magenta  
1 Part White

### Color 11

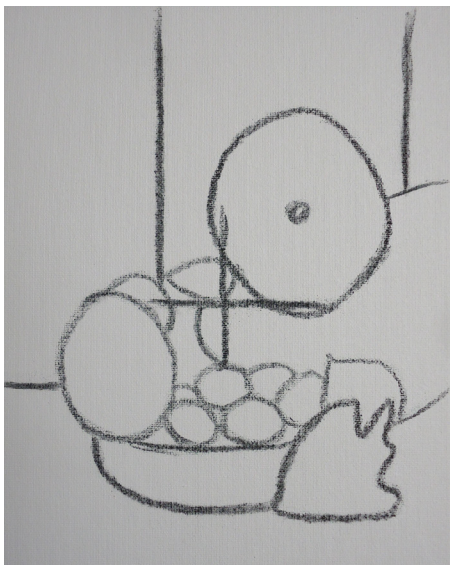


4 Part White  
1 Part Magenta



# Roses & Berries

## Steps 1-3

**1**

With a pencil, mark out where the center of your canvas is to help guide the placement and proportion of the roses, berries and bowl. Sketch the rough shapes of the objects in the painting. We used a dark pencil to show you how to make your guides, but when you create your own guides, use a light pencil so that it won't show through your paint.

**2**

Remove the sheet of paper from your pad, if you are using one of the Grumbacher Acrylic Pads that feature the In & Out Pages, you can insert your sheet later when you are finished with your work.

**3**

Mix a small amount of water into **Color 1**. This will be used for the underpainting of the wall. Use the edge of the bright brush to create two thin vertical lines with undiluted **Color 1**. Use **Color 2** with a little more water for the light parts of the wall panels.

### Color 1



2 Parts Green  
2 Parts Blue  
1 Part Red

### Color 2



1 Part White  
.25 Part Green  
.25 Part Blue

# Roses & Berries

## Steps 4-6



4

Use a clean brush with a little **Color 1** to paint random vertical streaks into the wall panels. Add a few hints of **Color 3** to the top left portion of the canvas. Next, use **Color 4** mixed with water for the table. With a little **White**, blend small streaks into the table.

### Color 1



2 Parts Green  
2 Parts Blue  
1 Part Red

### Color 3

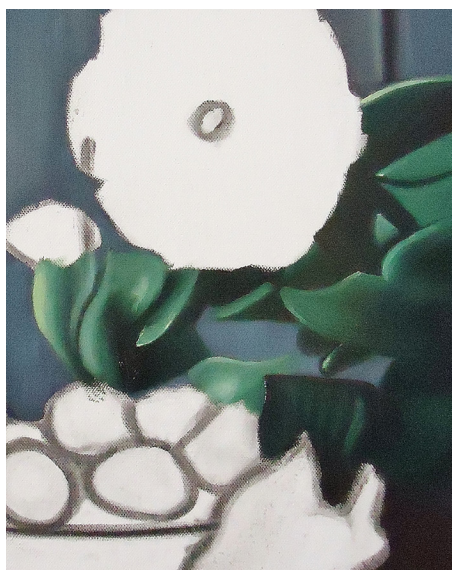


1 Part White  
1 Part Yellow

### Color 4



1 Part Green  
1 Part Blue  
1 Red



5

For the leaves, use **Color 5** thinned with water to start sketching out each leaf. Directly add **Sap Green** for the shadows and blend edges into the previous color. For the highlighted areas, use **Color 3**, blending as you go.

### Color 5



1 Part Magenta  
1 Part Green

### Color 3



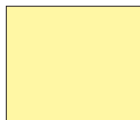
1 Part White  
1 Part Yellow



6

Mix 1 part **Red** into 1 part **Color 4** to create the darker part of the bowl. For the bowl's highlights, use **Color 3** on the rim in thin, curved strokes following the shape of the bowl. Use the darker bowl color for the flower stems. Lighten this mix with **yellow** and add this color into the table for depth.

### Color 3



1 Part White  
1 Part Yellow

### Color 4



1 Part Green  
1 Part Blue  
1 Red



# Roses & Berries

## Steps 7-9



7

Start with pure **Red** to block in the strawberries leaving a bit of white for the stems. Use **Color 1** to add shadows to berries and gently blend. For the cool highlights on the berries, mix a little **Color 6** where the shine appears and blend so this color appears faint.

### Color 1



2 Parts Green  
2 Parts Blue  
1 Part Red

### Color 6



1 Part Blue  
1 Part White



8

Wait for your painting to dry to the touch. Fill in the dark green stems with **Color 5**. Use a little **Color 7** on a round brush tip to define the individual leaves on the stems. To create shading, allow the light green to mix directly into the dark green.

### Color 5



1 Part Magenta  
1 Part Green

### Color 7



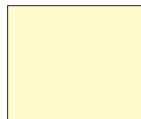
1 Part Yellow  
1 Part White  
1 Part Green



9

Use **Color 8** mixed with a little water to create transparent seeds on the berries. Add more paint with less water to build up the seeds. Use **Color 1** for berry shadows under the stems. Add more shading to the stems using **Color 5** and blend, and highlights with **Color 6**.

### Color 8



2 Parts White  
1 Part Yellow

### Color 1



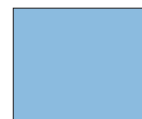
2 Parts Green  
2 Parts Blue  
1 Part Red

### Color 5



1 Part Magenta  
1 Part Green

### Color 6



1 Part Blue  
1 Part White

# Roses & Berries

## Step 10

**10**

For the darkest part of the roses, add **Red** to **Color 4**. To add contrast, add water to **white** and touch up the lightest parts of the roses. Use this mix to also add white streaks into the table for grain, avoiding the shadows.

**Color 10**

1 Part Magenta  
1 Part White

**Color 11**

4 Part White  
1 Part Magenta

**Finished  
Painting**

